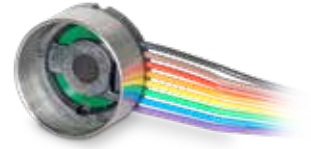


# ENX 16 EASY XT Encoder Ø16 mm, 1...1024 CPT

ENX



Key data		EASY incremental differential	
Number of channels		3	
Max. counts per turn		1024	
Encoder length L <sup>2</sup>	mm	8.5	
Ambient temperature	°C	-55...+125	
Weight	g	7	

Selection criteria		EASY incremental differential	
Speed and rotation direction detection		■	
Speed and position control		■	
Compact and robust design		■	
High resolution		■	
Cost effective		▲	

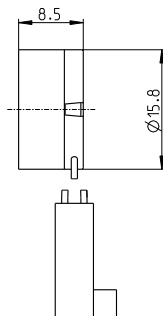
■ suitable ▲ suitable to a limited extent ● not suitable

Specifications		EASY incremental differential	
Supply voltage V <sub>CC</sub>	V	5 ±0.5	
Typical current draw	mA	22	
Max. operating frequency	kHz	1600	
Max. Speed	rpm	30 000	
Connector		10-pin 2.54 mm multipoint connector (IEC/EN 60603-13 / DIN41651)	
		Pin 1 not connected	
		Pin 2 V <sub>CC</sub>	
		Pin 3 GND	
		Pin 4 not connected	
		Pin 5 channel $\bar{A}$	
		Pin 6 channel A	
		Pin 7 channel $\bar{B}$	
		Pin 8 channel B	
		Pin 9 channel I	
		Pin 10 channel I	
		Output signal: EIA-Standard RS 422	
		Output current per channel: ±20 mA	



Variants		For configurable units			Non-configurable units					
Part Number		depends on configuration			584776	606052	577614	542079	577671	530965
Counts per turn <sup>1</sup>		1...1024			128	256	500	512	1000	1024
Cable length	mm	500, 1000, 1500			500	500	500	500	500	500
Alignment of cable outlet in relation to motor flange °		15 (pitch)			0	0	0	0	0	0

Modular system		Page	Dimensions standard version	M 1:1	Notes
<b>DC motor</b>	<b>EC motor</b>				
DCX 16 S	105-106	EC-max 16	279/281		1 maxon controllers require a resolution of at least 16 counts per turn.
DCX 16 L	107-108	EC-max 22	282-283		
DCX 19 S	109-110	EC-max 30	284-285		2 Length given excludes any intermediate plate for mounting on a motor. The effective total length of a motor-encoder combination can be found on the respective dimensional drawing.
DCX 22 S	111-112	EC-max 40	286-287		
DCX 22 L	113-114	EC-4pole 22	291-292		
DCX 26 L	115-116	EC-4pole 30	293/295		
DCX 32 L	117	EC-i 30	302-305		
DCX 35 L	118	EC-i 40	306-311		
		EC-i 52	312-315		
		ECX PRIME 16 M	236		
		ECX PRIME 16 L	237		
		ECX PRIME 22 L	239		



Further technical details can be found in the product information in the online shop under Downloads.